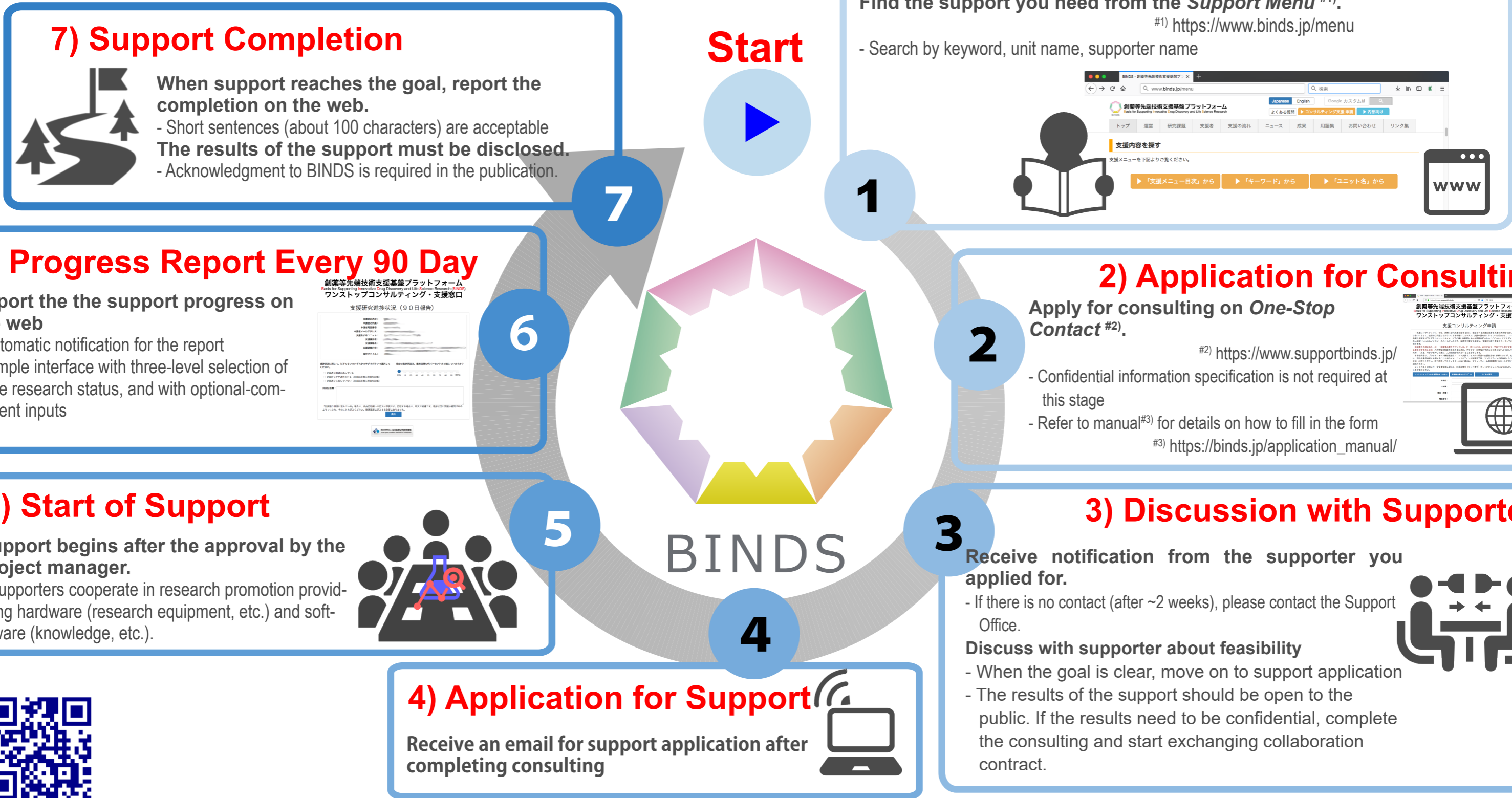


Your Research Upgrades in Seven Steps



創薬等先端技術支援基盤プラットフォーム
Basis for Supporting Innovative Drug Discovery and Life Science Research



1) Browse Support Menu

Find the support you need from the *Support Menu* #1).
#1) <https://www.binds.jp/menu>
- Search by keyword, unit name, supporter name



1

2) Application for Consulting

Apply for consulting on *One-Stop Contact* #2).
#2) <https://www.supportbinds.jp/>
- Confidential information specification is not required at this stage
- Refer to manual#3) for details on how to fill in the form
#3) https://binds.jp/application_manual/



2

3) Discussion with Supporter

Receive notification from the supporter you applied for.
- If there is no contact (after ~2 weeks), please contact the Support Office.
Discuss with supporter about feasibility
- When the goal is clear, move on to support application
- The results of the support should be open to the public. If the results need to be confidential, complete the consulting and start exchanging collaboration contract.



3

4) Application for Support

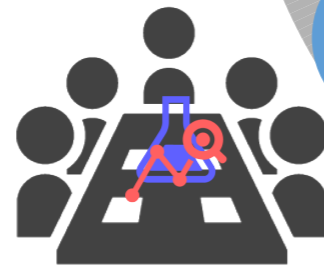
Receive an email for support application after completing consulting



4

5) Start of Support

Support begins after the approval by the project manager.
- Supporters cooperate in research promotion providing hardware (research equipment, etc.) and software (knowledge, etc.).



5

6) Progress Report Every 90 Day

Report the the support progress on the web
- Automatic notification for the report
- Simple interface with three-level selection of the research status, and with optional-comment inputs



6

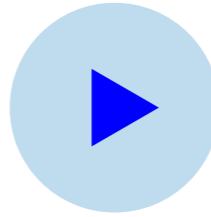
7) Support Completion



When support reaches the goal, report the completion on the web.
- Short sentences (about 100 characters) are acceptable
The results of the support must be disclosed.
- Acknowledgment to BINDS is required in the publication.

7

Start



BINDS is a research support project by AMED. The purpose of this project is to support and promote research outside the project. If you find an item that can promote your research from the "Support Menu", do not hesitate to apply for the consultation. Researchers at the forefront of the field respond to research consultations. If support is possible, you can apply for support and actual support will begin. Support begins unless it is technically impossible. For more information, please visit BINDS website (www.binds.jp). For inquiries, please contact the support office (assist@mail.ecc.u-tokyo.ac.jp).